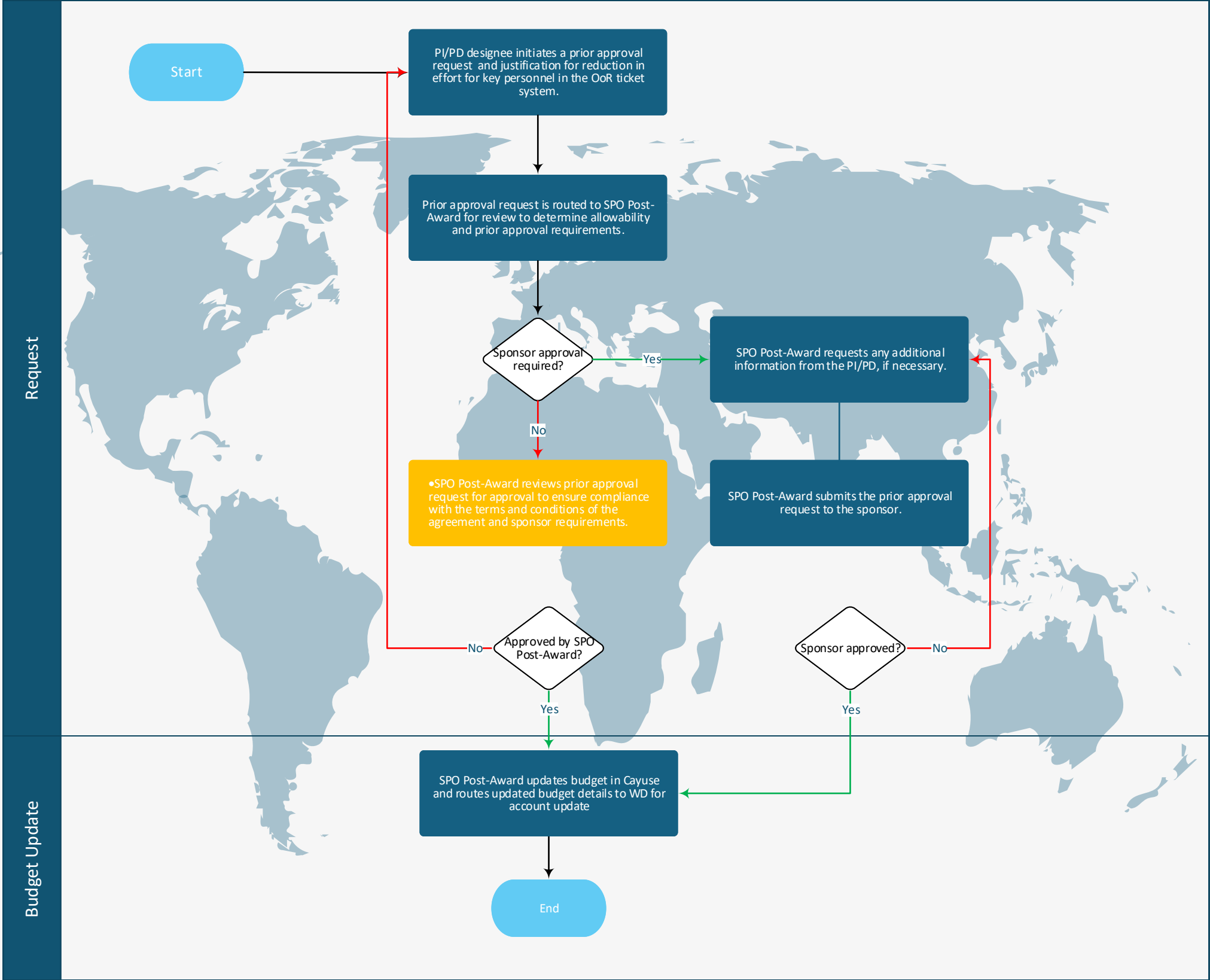


Reduction in Effort for Key Personnel



Key:
SPO - Sponsored Programs Office
PI - Principal Investigator
PD - Project Director
OoR - Office of Research Ticketing System
WD - Workday
Key Control

Key Controls:
SPO reviews budget revisions for consistency with the terms and conditions of the agreement and sponsor requirements.
SPO updates the budget with revised information in WD